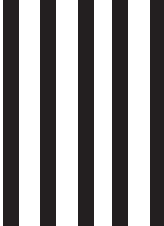


NO POSTAGE
NECESSARY
IF MAILED
IN THE
UNITED STATES



BUSINESS REPLY MAIL
FIRST-CLASS MAIL PERMIT NO. 19 PLEASANTVILLE, NJ

POSTAGE WILL BE PAID BY ADDRESSEE

GREENLIFE ENERGY SOLUTIONS
UNIT A

6754 WASHINGTON AVE
EGG HARBOR TOWNSHIP NJ 08234-9809



TEAR AT PERFORATION BEFORE MAILING



STATEWIDE ASSISTANCE PHONE NUMBERS:

First Call for Help in New Jersey
211

Statewide Low Income Home Energy
Assistance Program (LIHEAP)
800-510-3102

Lifeline Program and
Pharmaceutical Assistance to the
Aged and Disabled (PAAD)
800-792-9745

Universal Service Fund (USF)
866-240-1347



877-796-8728

Working together
to save you energy
and money

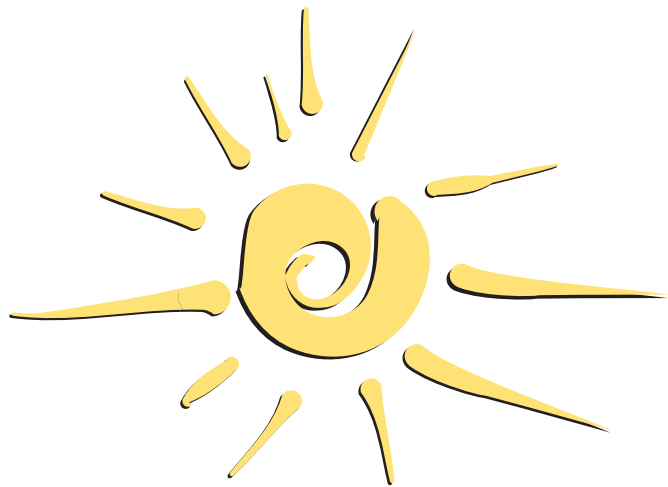


New Jersey's Clean Energy Program is a statewide program administered by the New Jersey Board of Public Utilities that promotes energy efficiency and renewable energy for all New Jersey ratepayers, including residences, businesses, schools and municipalities. For more information please visit: NJCleanEnergy.com.

©New Jersey Board of Public Utilities. All Rights Reserved.

1111-1119

WORKING TOGETHER TO SAVE YOU ENERGY AND MONEY



WHAT IS THE NEW JERSEY COMFORT PARTNERS PROGRAM?

The New Jersey Board of Public Utilities and your electric and gas utilities have joined together under *New Jersey's Clean Energy Program™* to partner with you and your family to save energy and money by making your home more energy efficient.

OUR COMMITMENT TO HELP YOU REDUCE ENERGY USE

Program representatives will work with you personally, in your house or apartment, to evaluate the current level of energy efficiency in your home. They'll review many factors that affect your energy use – including home heating and cooling, water heating, lighting, and major appliances. They'll teach you and your family members new ways to conserve energy and help you create an action plan to support your efforts.

In most cases, program representatives will install energy-saving home improvements to lower your energy costs and improve your health, safety, and comfort. Improvements may include measures such as added insulation, caulking, weatherstripping, energy-saving showerheads, and light bulbs – all at no cost to you. All work is guaranteed for one year.

YOUR COMMITMENT TO REDUCE YOUR ENERGY USE

When you sign an agreement to participate in New Jersey Comfort Partners, you truly become a partner in managing your energy consumption. Together with your Comfort Partners program representative, you and your family will make and carry out an action plan to help save energy. Everyone in your household has a role to play in lowering your family's energy costs while increasing comfort, health, and safety.

WHO IS ELIGIBLE TO PARTICIPATE?

To participate in New Jersey Comfort Partners, you must live in New Jersey and your income must be at or below 250% of the Federal Poverty Guidelines, or you must participate in one of the federal/safety net partnership programs listed below:

- Home Energy Assistance Program (HEAP)
- Lifeline
- Pharmaceutical Assistance to the Aged and Disabled (PAAD)
- Section 8 Housing
- Federal Supplemental Security Income (SSI)
- Temporary Assistance to Needy Families (TANF)
- Universal Service Fund (USF)
- Medicaid
- Supplemental Nutrition Assistance Program (SNAP)
- General Assistance (GA)

Homeowners must own their home for a minimum of one year. Homes that are 0 – 5 years old or under builder's warranty are excluded.

New Jersey Comfort Partners has the right to verify income.

YOU MUST ALSO:

- Be a customer of record with an individually metered* electric and/or gas account and use this home as your primary residence, and
- Live in a building with 1 – 14 units (apartment, townhouse, etc.) that are individually metered. Buildings with more than 14 units are not eligible.

Participation will be prioritized by energy use with the highest energy users being served first.

*Individually metered means your electric and/or gas meter(s) only service your residence.

Please send me more information and an application for participation in NEW JERSEY COMFORT PARTNERS:

Name: _____

Address: _____

City: _____

State: **NJ** Zip: _____

Phone/day: _____

Phone/evening: _____

Email: _____

My utility companies are [Check all that apply]

Electric Company:

- Atlantic City Electric
- Jersey Central Power & Light
- PSE&G

Gas Company:

- Elizabethtown Gas
- New Jersey Natural Gas
- PSE&G
- South Jersey Gas

TEAR AT PERFORATION BEFORE MAILING

For more information or to receive a Comfort Partners Program application, fill out and mail the attached form, or call the program toll-free number: **877-796-8728**.

You can also access program information on our website at NJCleanEnergy.com/CP.